

The only method for real pressure profile measurement of doctors in board and paper machines

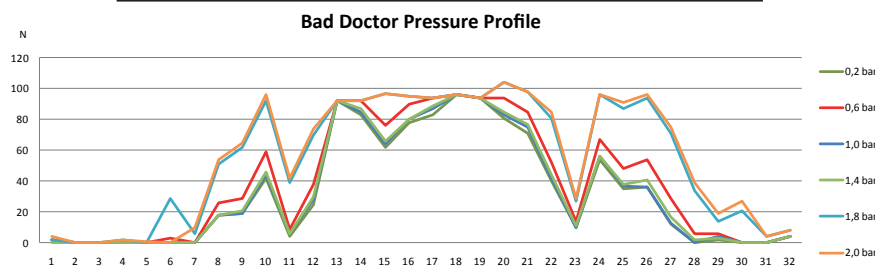
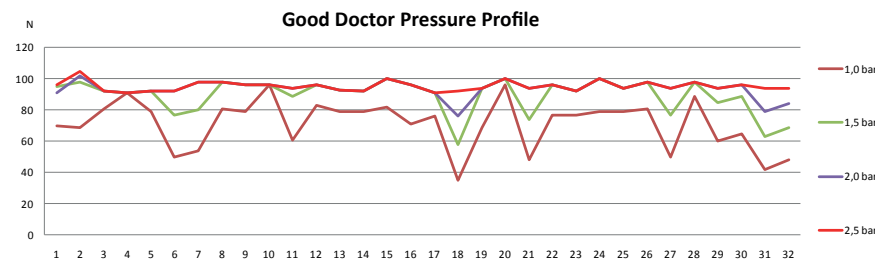
## Method

### What is BladeCheck®?

The design of the patented BladeCheck™ measurement device is based on special segmented blades. The contact pressure of the blade is checked according to the patented BladeCheck™ methods by means of measuring blades, which are installed instead of cleaning blades. These measuring blades include strain gauges which are arranged at regular intervals parallel to the length of the roll and connected to a computer. This allows direct measurement of the local contact pressure across the entire length of the roll.

**BladeCheck® is the only reliable method for the determination of the real blade load profile**

## Examples



## Applications

### Why do you need a doctor profile measurement?

- paper build-up: „winder“ / „packer“
- poor moisture CD profile
- too many breaks
- uneven doctor wear

### What can be the reason for these problems?

- defective blade holder
- bent or broken press fingers
- defective hose holder
- lack of parallelism - not aligned
- wrong blade angle
- worn bearing clamps
- problem with pneumatics
- or a combination of these problems

## Benefits



Old method for blade load measurement:  
A balance is put between the blade and an existing fix point.  
Disadvantage of this old method:

- it measures only the average total load
- difficult due to limited space
- can be dangerous to the operator

### Advantage of BladeCheck®

- Strain gauges allow an exact and reproducible measurement
- safe because measuring blades fit into existing holders
- exact data for each sensor and results in graphs
- measurement possible in narrow/difficult positions

## Offer

### Do you want to know the real pressure at the tip of your doctor?

With the experience of more than 100 doctor profiles in old and new paper and board machines up to over 11m width, we offer doctor load measurements over the whole length of your blade at various pressures. The results in N/m will show the total blade profile and average overall real load at the tip of your blade.

## Contact

### PaCon Ltd. & Co. KG

Schlederloh 15  
D-82057 Icking  
Germany

Phone: +49-700-10505010 / +49-8801-5456905

Telefax: +49-700-10202010 / +49-8801-5456906

E-Mail: [info@bladecheck.de](mailto:info@bladecheck.de)

Web: [www.bladecheck.de](http://www.bladecheck.de)